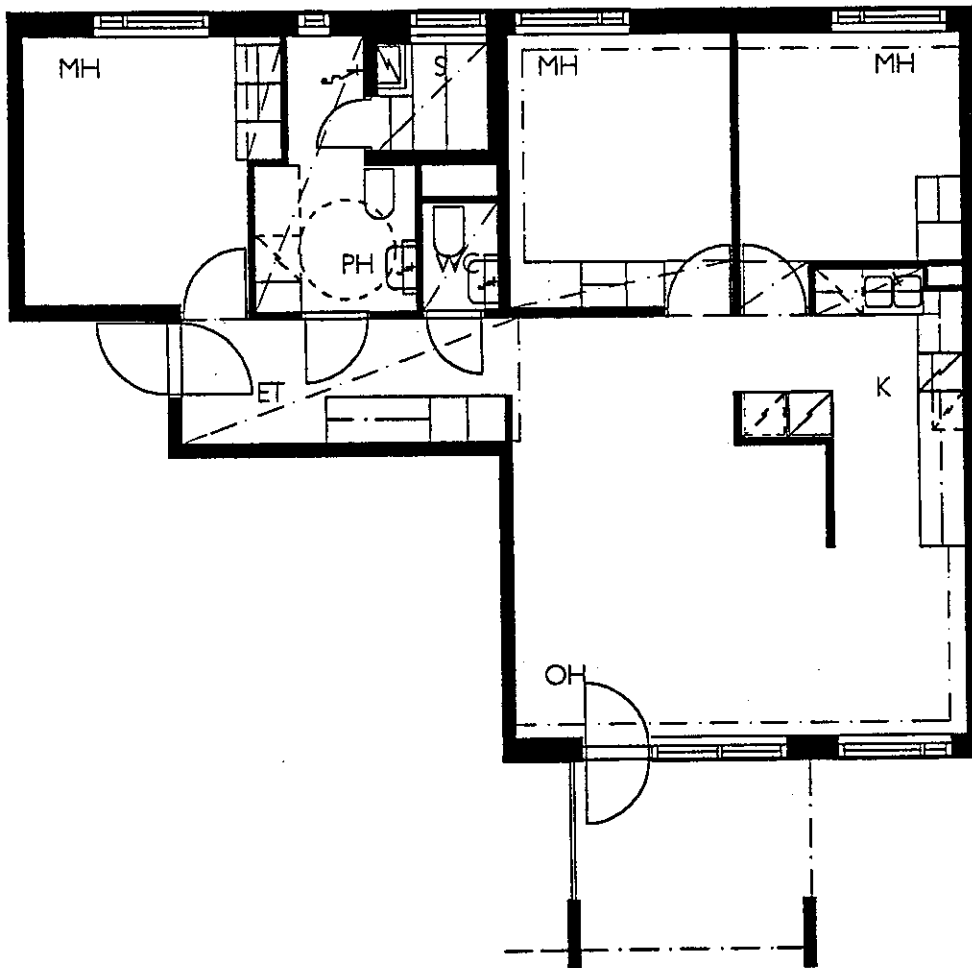
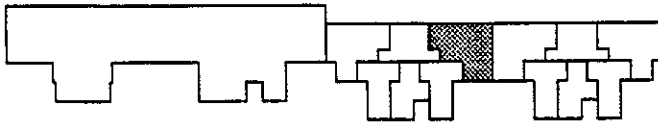




3.12.1999

HELSINGIN ASUMISOIKEUS OY KUNINKAANKARTANONTIE 6

4H+K+S+PIHA 84.5 M²



ASUNNOT : B 23

- KALEVANKATU 18 C
- KALEVAGATAN 18 C
- 00100 HELSINKI
- PUH. 09-725 66311
- FAX. 09-725 66333
- stefan@ahlman.pp.fi

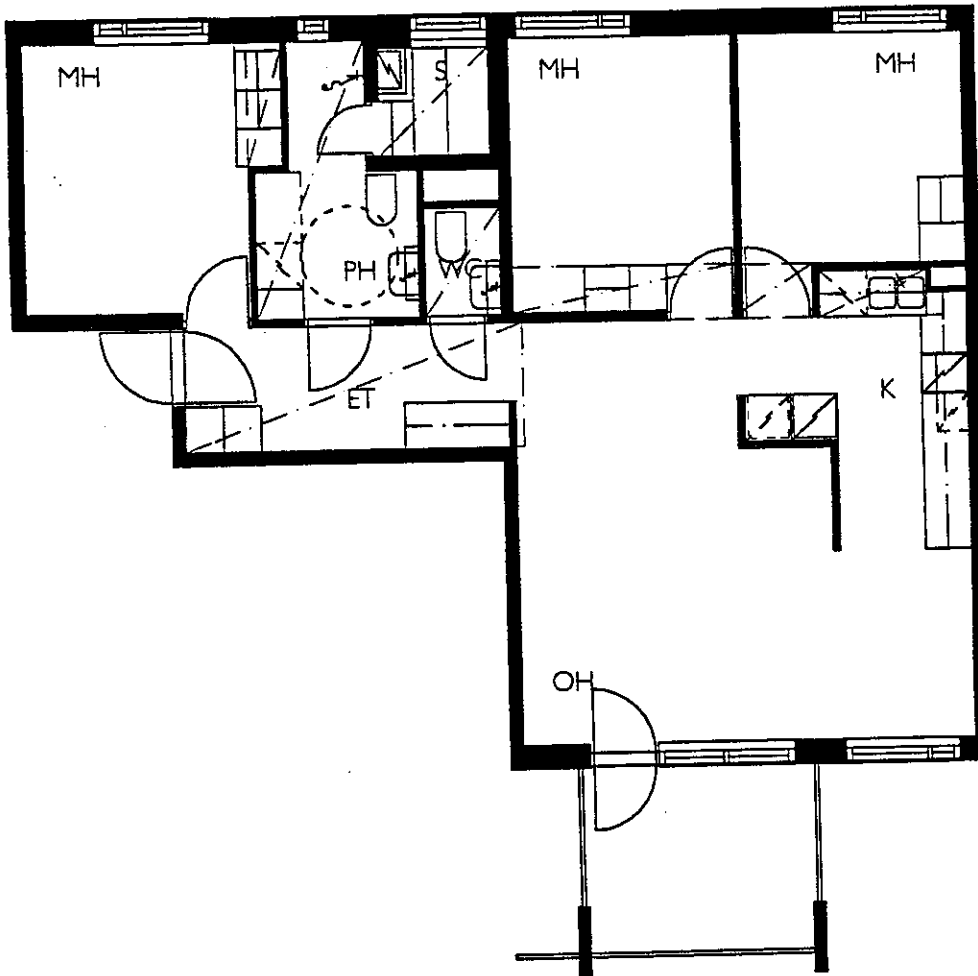
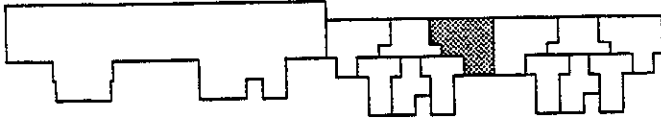




3.12.1999

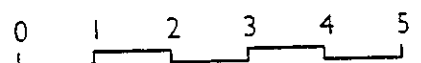
HELSINGIN ASUMISOIKEUS OY KUNINKAANKARTANONTIE 6

4H+K+S+PARVEKE 84.5 M²



ASUNNOT : B 26, B 31, B 36, B 41

- KALEVANKATU 18 C
- KALEVAGATAN 18 C
- 00100 HELSINKI
- PUH. 09-725 66311
- FAX. 09-725 66333
- stefan@ahlman.pp.fi

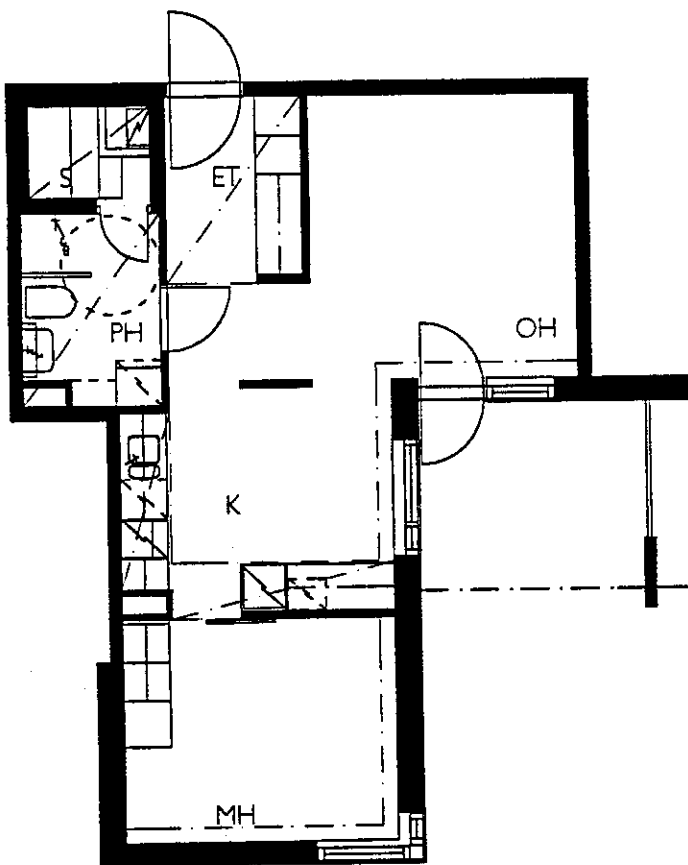
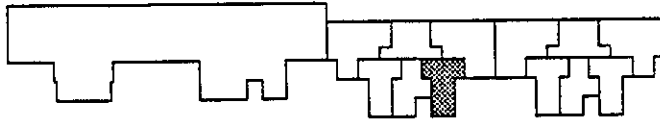




3.12.1999

HELSINGIN ASUMISOIKEUS OY KUNINKAANKARTANONTIE 6

2H+K+S+PIHA 48.5 M²



ASUNNOT : B 24

- KALEVANKATU 18 C
- KALEVAGATAN 18 C
- 00100 HELSINKI
- PUH. 09-725 66311
- FAX. 09-725 66333
- stefan@ahlman.pp.fi

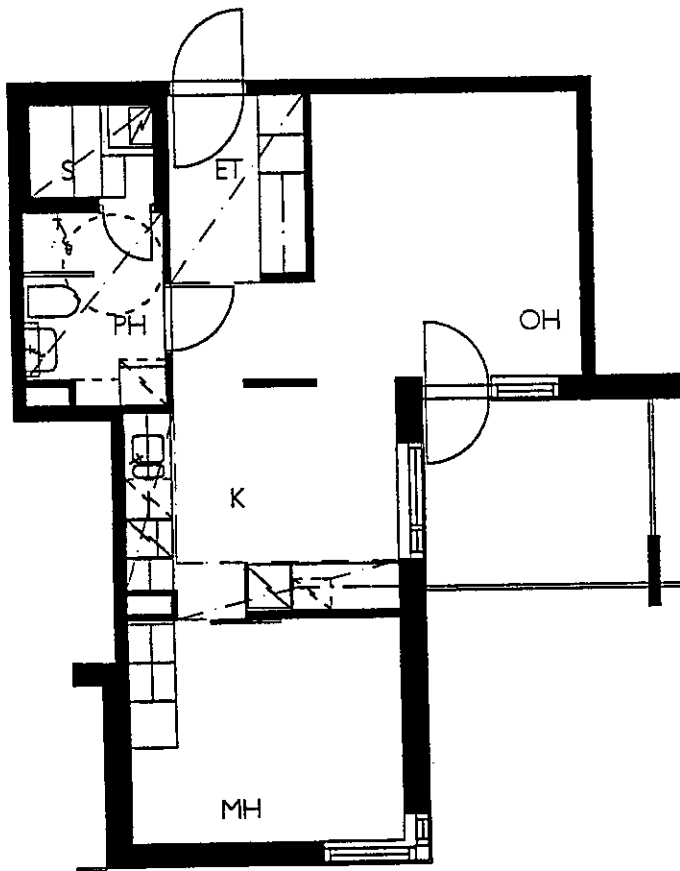
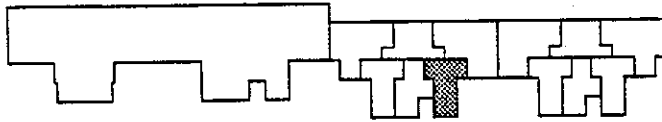




3.12.1999

HELSINGIN ASUMISOIKEUS OY KUNINKAANKARTANONTIE 6

2H+K+S+PARVEKE 48.5 M²



ASUNNOT : B 27, B 32

- KALEVANKATU 18 C
- KALEVAGATAN 18 C
- 00100 HELSINKI
- PUH. 09-725 66311
- FAX. 09-725 66333
- stefan@ahlman.pp.fi

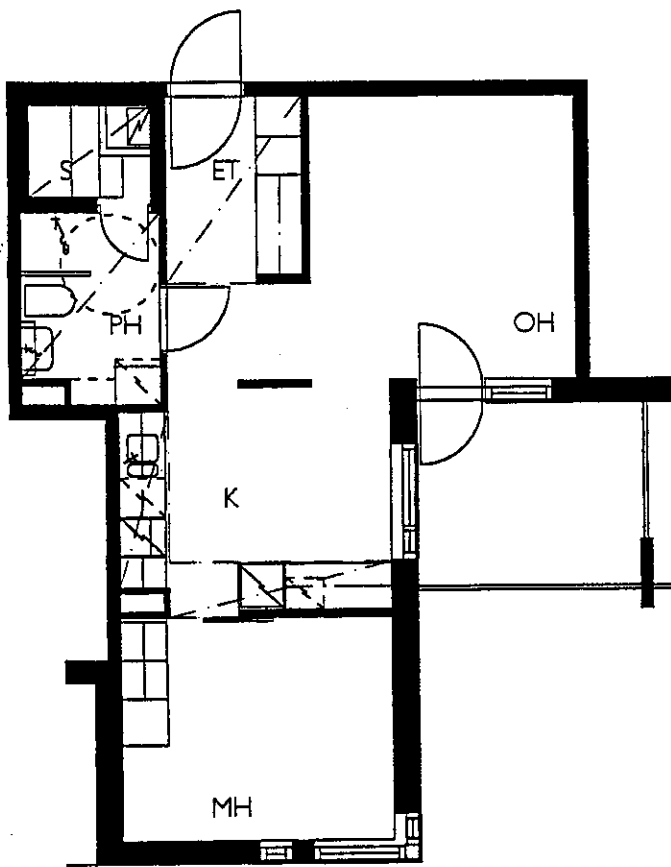
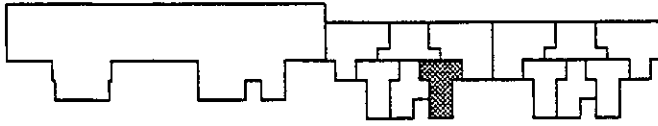




3.12.1999

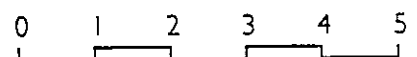
HELSINGIN ASUMISOIKEUS OY KUNINKAANKARTANONTIE 6

2H+K+S+PARVEKE 48.5 M²



ASUNNOT : B 37, B 42

- KALEVANKATU 18 C
- KALEVAGATAN 18 C
- 00100 HELSINKI
- PUH. 09-725 66311
- FAX. 09-725 66333
- stefan@ahlman.pp.fi

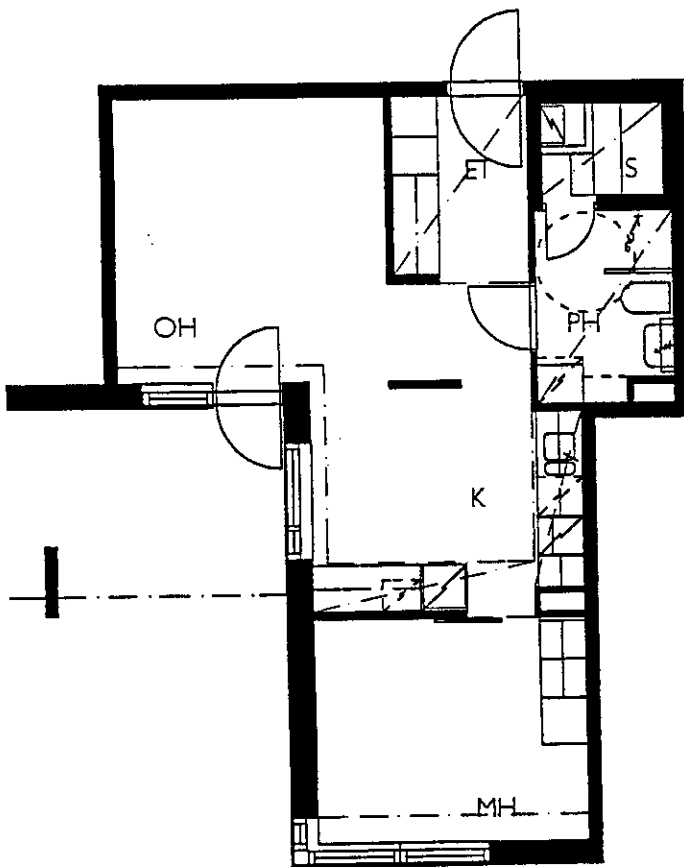
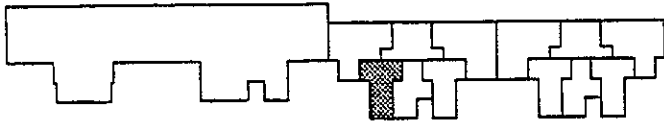




3.12.1999

HELSINGIN ASUMISOIKEUS OY KUNINKAANKARTANONTIE 6

2H+K+S+PIHA 48.5 M2



ASUNNOT : B 25

- KALEVANKATU 18 C
- KALEVAGATAN 18 C
- 00100 HELSINKI
- PUH. 09-725 66311
- FAX. 09-725 66333
- stefan@ahlman.pp.fi

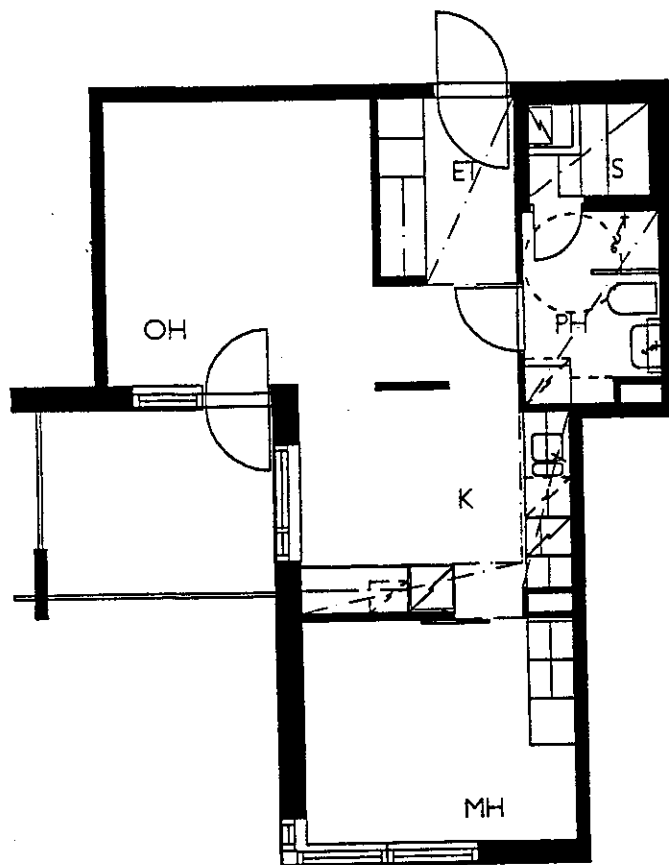
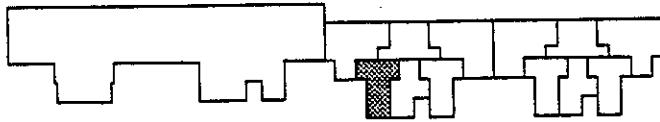




3.12.1999

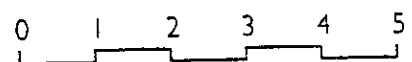
HELSINGIN ASUMISOIKEUS OY KUNINKAANKARTANONTIE 6

2H+K+S+PARVEKE 48.5 M²



ASUNNOT : B 29, B 34, B 39, B 44

- KALEVANKATU 18 C
- KALEVAGATAN 18 C
- 00100 HELSINKI
- PUH. 09-725 66311
- FAX. 09-725 66333
- stefan@ahlman.pp.fi

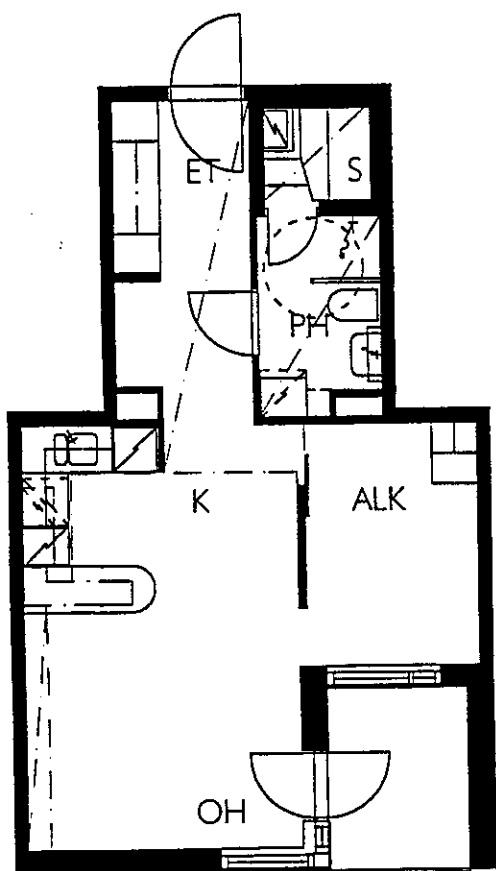
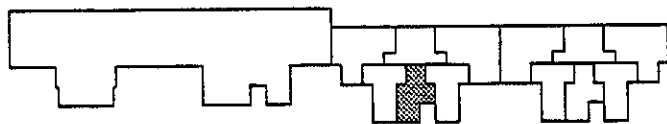




3.12.1999

HELSINGIN ASUMISOIKEUS OY KUNINKAANKARTANONTIE 6

1H+KK+ALK.+S+PARVEKE 41.5 M²



ASUNNOT : B 28, B 33, B 38, B 43

- KALEVANKATU 18 C
- KALEVAGATAN 18 C
- 00100 HELSINKI
- PUH. 09-725 66311
- FAX. 09-725 66333
- stefan@ahlman.pp.fi

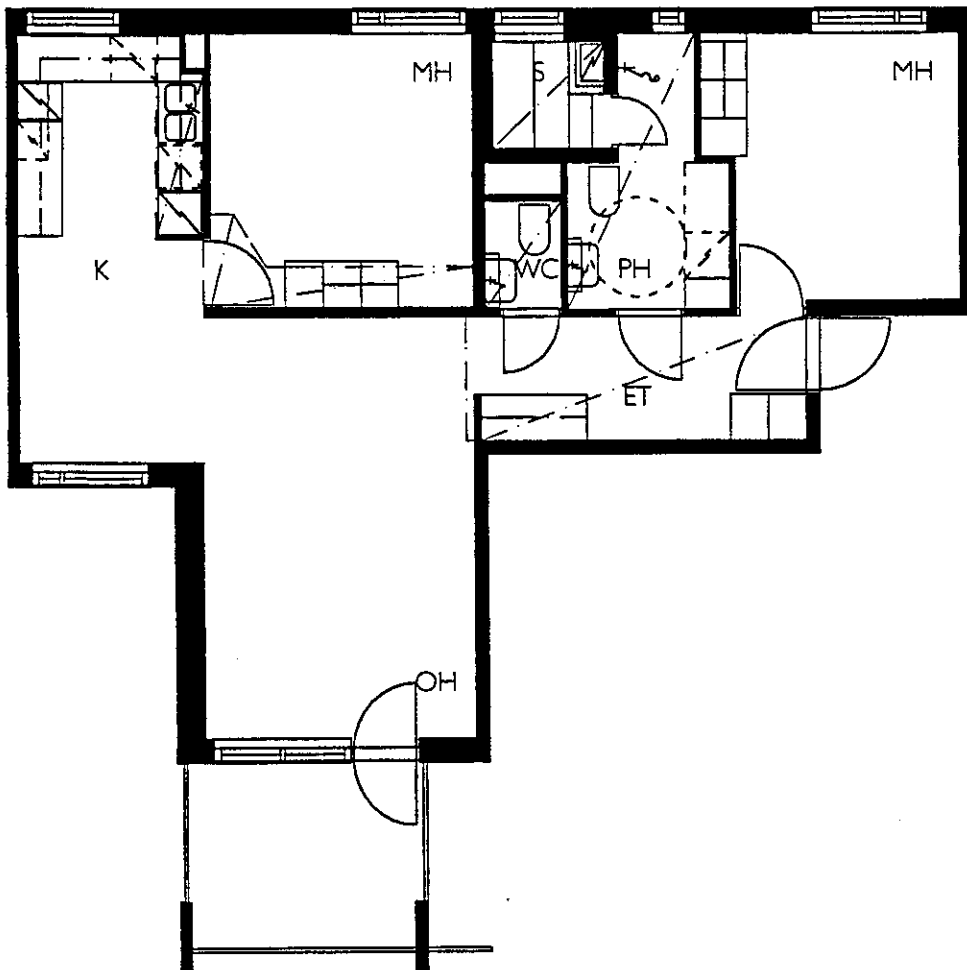
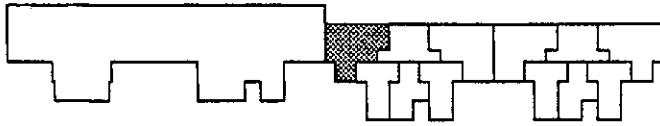




3.12.1999

HELSINGIN ASUMISOIKEUS OY KUNINKAANKARTANONTIE 6

3H+K+S+PARVEKE 75.5 M2



ASUNNOT : B 30, B 35, B 40, B 45

- KALEVANKATU 18 C
- KALEVAGATAN 18 C
- 00100 HELSINKI
- PUH. 09-725 66311
- FAX. 09-725 66333
- stefan@ahlman.pp.fi

