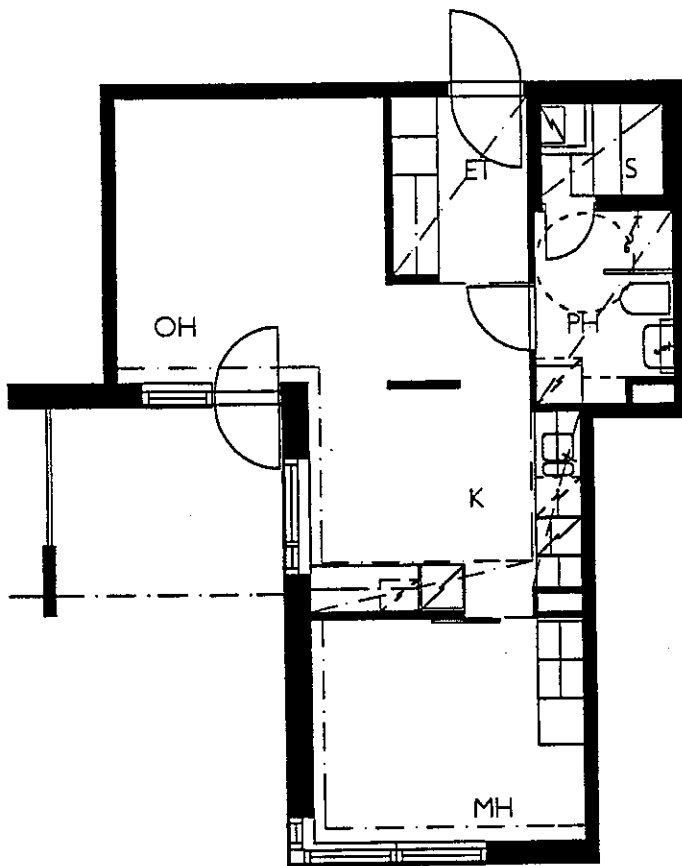
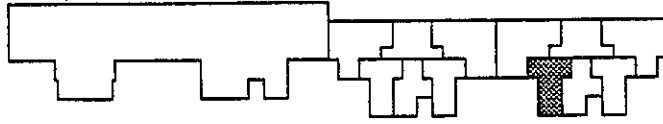




3.12.1999

HELSINGIN ASUMISOIKEUS OY KUNINKAANKARTANONTIE 6

2H+K+S+PIHA 48.5 M<sup>2</sup>



ASUNNOT : A I

- KALEVANKATU 18 C
- KALEVAGATAN 18 C
- 00100 HELSINKI
- PUH. 09-725 66311
- FAX. 09-725 66333
- stefan@ahlman.pp.fi

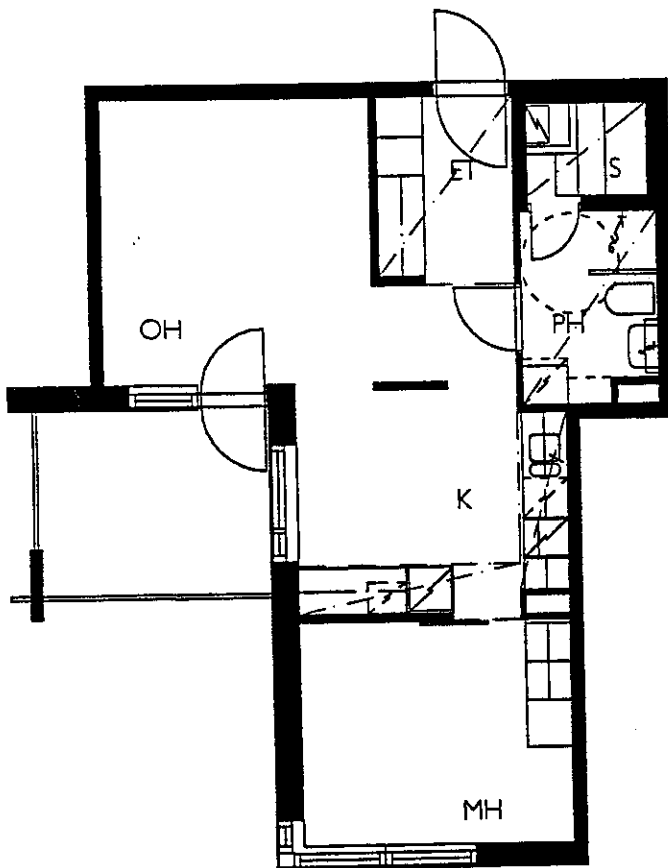
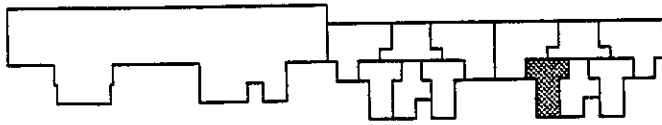




3.12.1999

HELSINGIN ASUMISOIKEUS OY KUNINKAANKARTANONTIE 6

2H+K+S+PARVEKE 48.5 M<sup>2</sup>



ASUNNOT : A 6, A 11, A 16, A 21

- KALEVANKATU 18 C
- KALEVAGATAN 18 C
- 00100 HELSINKI
- PUH. 09-725 66311
- FAX. 09-725 66333
- stefan@ahlman.pp.fi

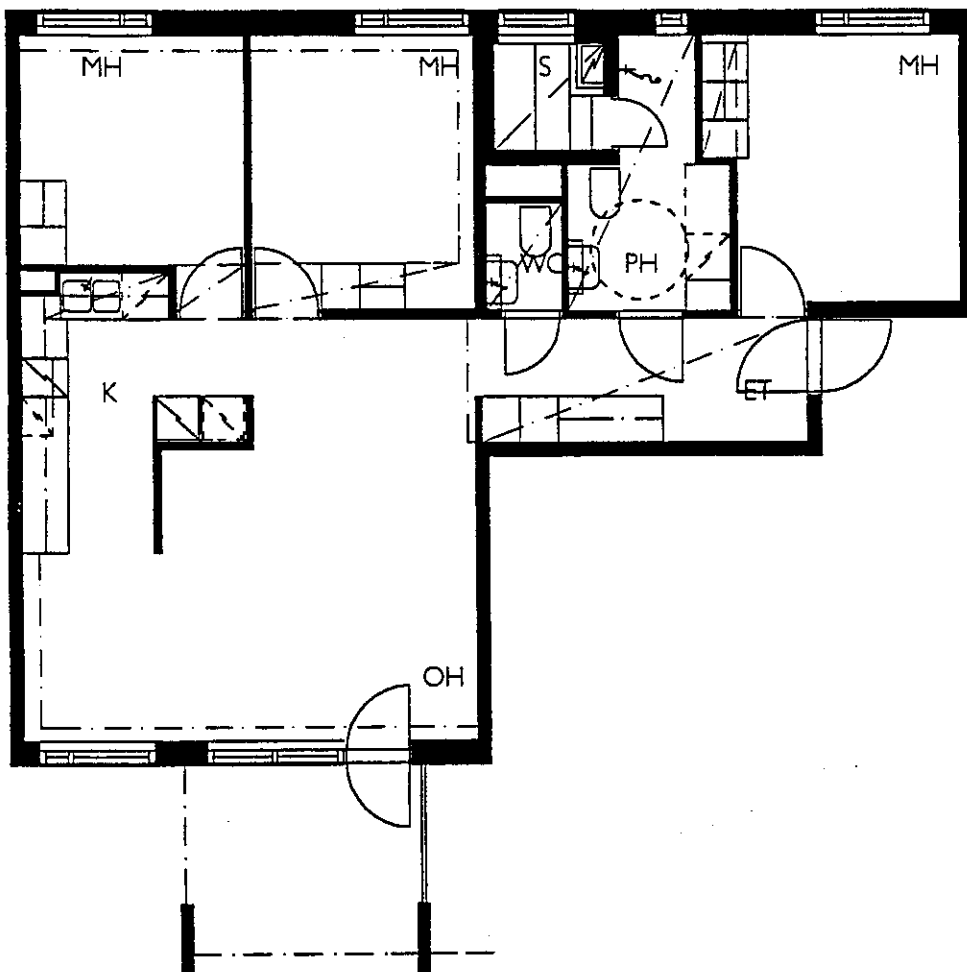
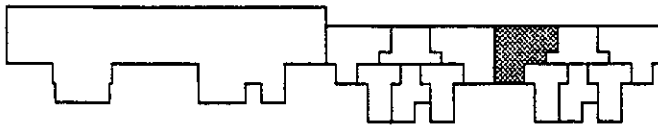




3.12.1999

HELSINGIN ASUMISOIKEUS OY KUNINKAANKARTANONTIE 6

4H+K+S+PIHA 84.5 M<sup>2</sup>



ASUNNOT : A2

- KALEVANKATU 18 C
- KALEVAGATAN 18 C
- 00100 HELSINKI
- PUH. 09-725 66311
- FAX. 09-725 66333
- stefan@ahlman.pp.fi

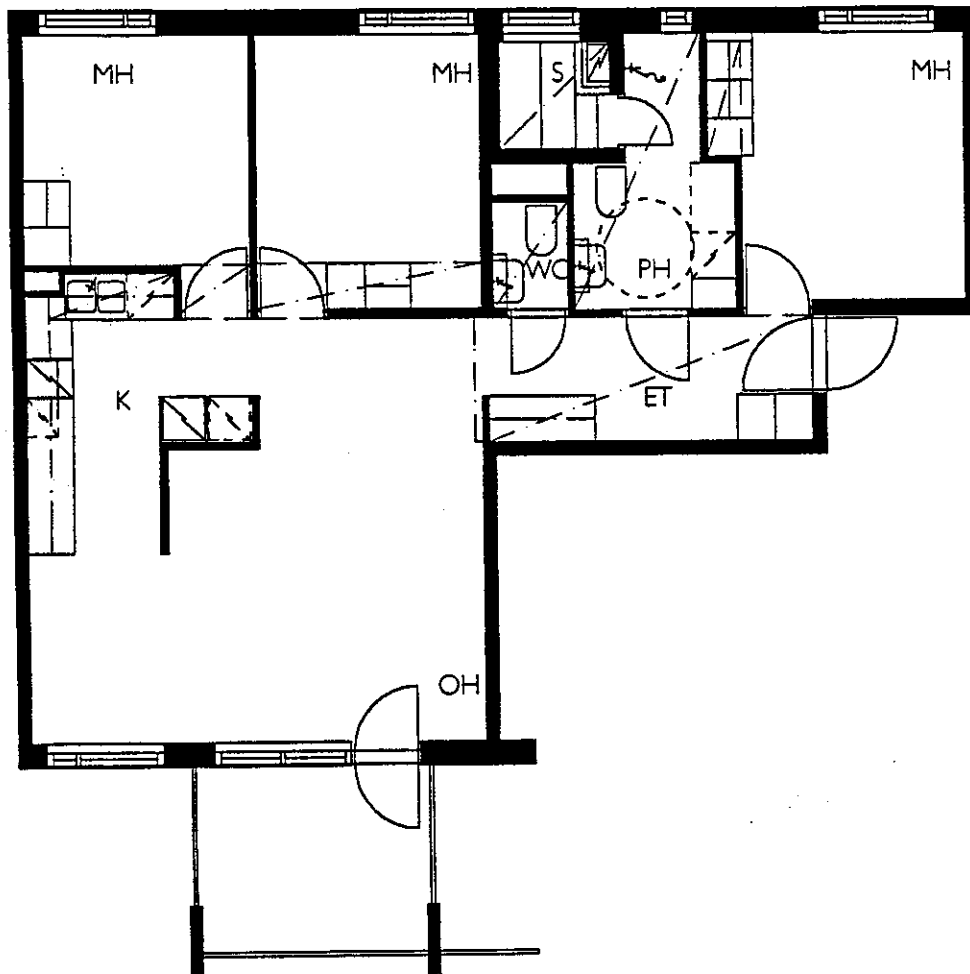
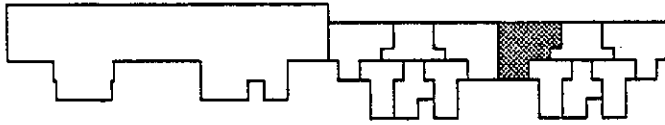




3.12.1999

HELSINGIN ASUMISOIKEUS OY KUNINKAANKARTANONTIE 6

4H+K+S+PARVEKE 84.5 M<sup>2</sup>



ASUNNOT : A 7, A 12, A 17, A 22

- KALEVANKATU 18 C
- KALEVAGATAN 18 C
- 00100 HELSINKI
- PUH. 09-725 66311
- FAX. 09-725 66333
- stefan@ahlman.pp.fi

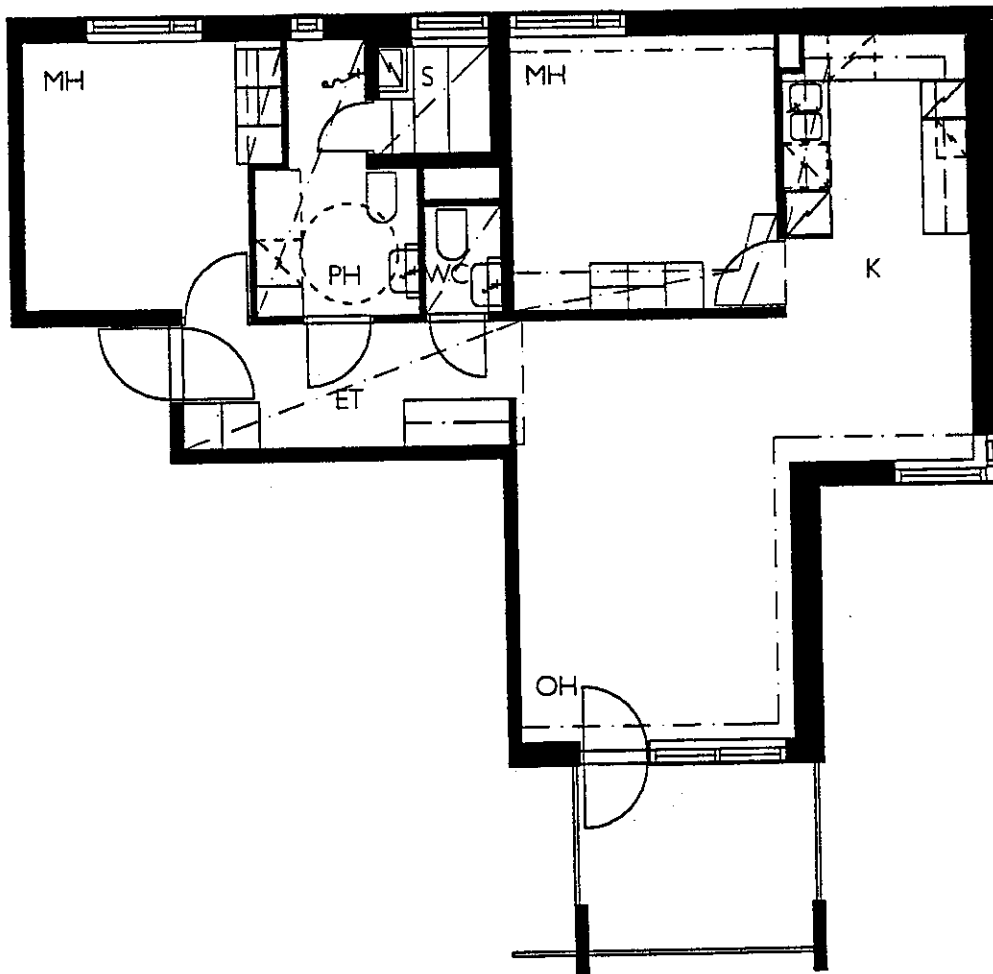
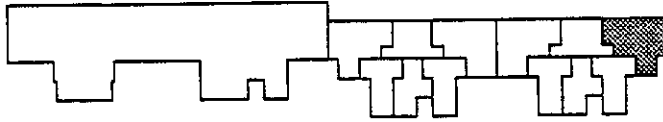




3.12.1999

HELSINGIN ASUMISOIKEUS OY KUNINKAANKARTANONTIE 6

3H+K+S+PARVEKE 75.5 M2



ASUNNOT : A3

- KALEVANKATU 18 C
- KALEVAGATAN 18 C
- 00100 HELSINKI
- PUH. 09-725 66311
- FAX. 09-725 66333
- stefan@ahlman.pp.fi

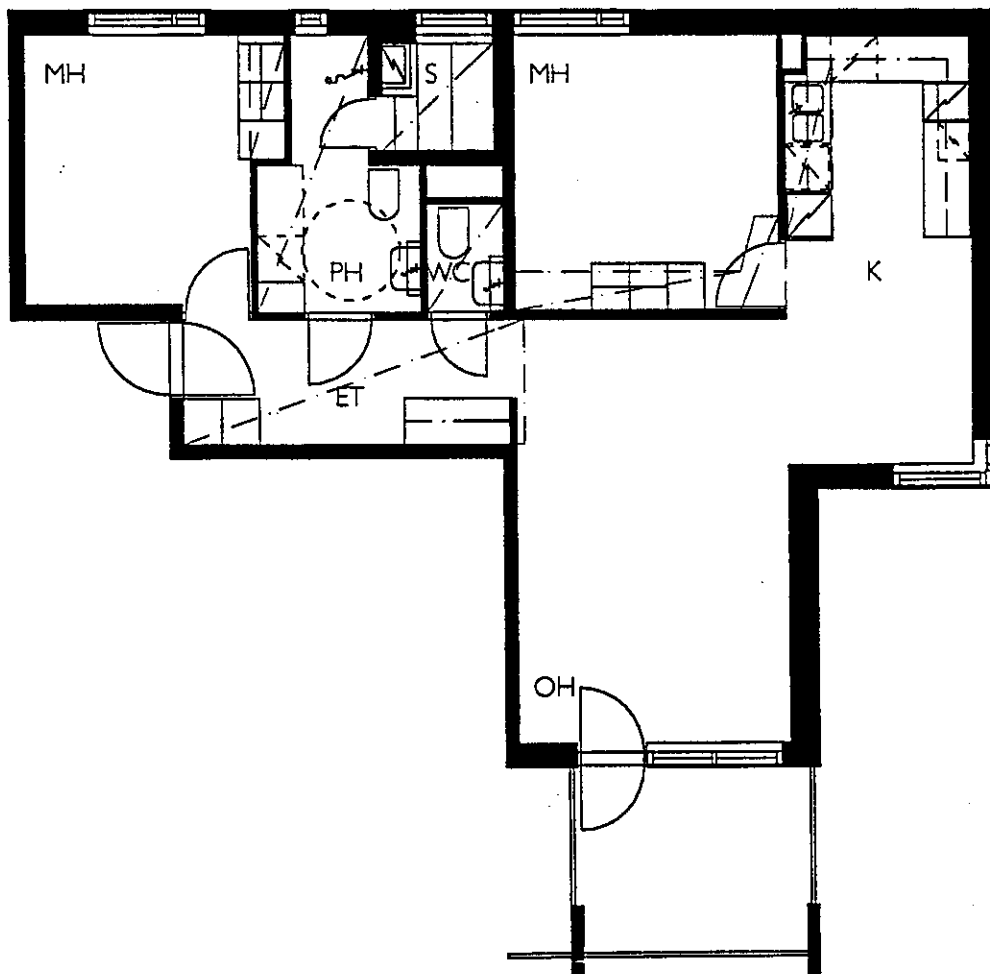
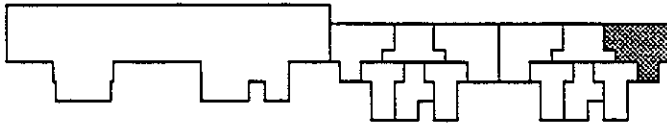




3.12.1999

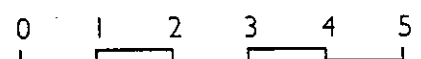
HELSINGIN ASUMISOIKEUS OY KUNINKAANKARTANONTIE 6

3H+K+S+PARVEKE 75.5 M2



ASUNNOT : A 8, A 13, A 18

- KALEVANKATU 18 C
- KALEVAGATAN 18 C
- 00100 HELSINKI
- PUH. 09-725 66311
- FAX. 09-725 66333
- stefan@ahلمان.pp.fi

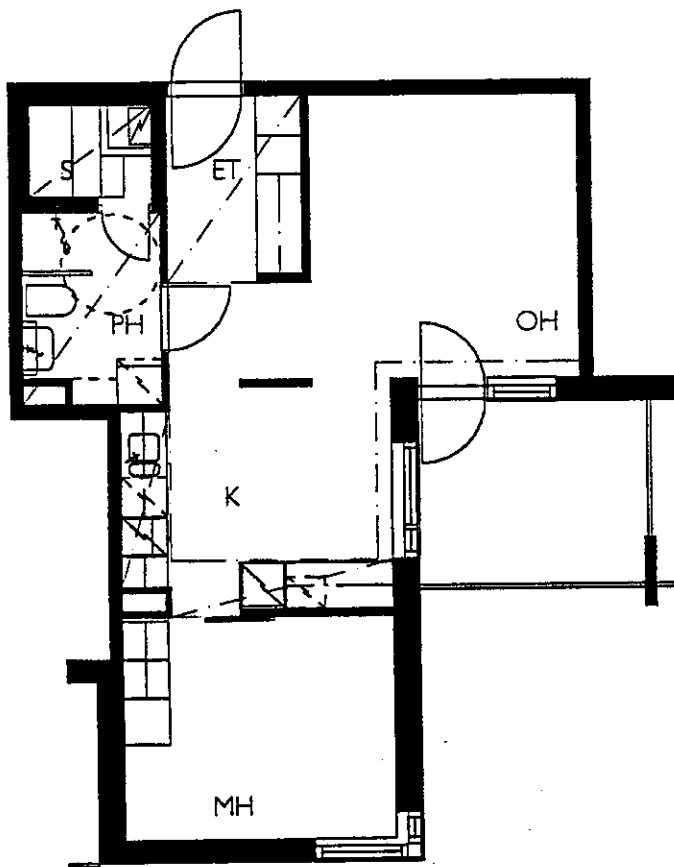
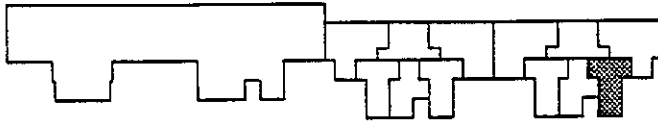




3.12.1999

HELSINGIN ASUMISOIKEUS OY KUNINKAANKARTANONTIE 6

2H+K+S+PARVEKE 48.5 M<sup>2</sup>



ASUNNOT : A 4

- KALEVANKATU 18 C
- KALEVAGATAN 18 C
- 00100 HELSINKI
- PUH. 09-725 66311
- FAX. 09-725 66333
- stefan@ahlman.pp.fi

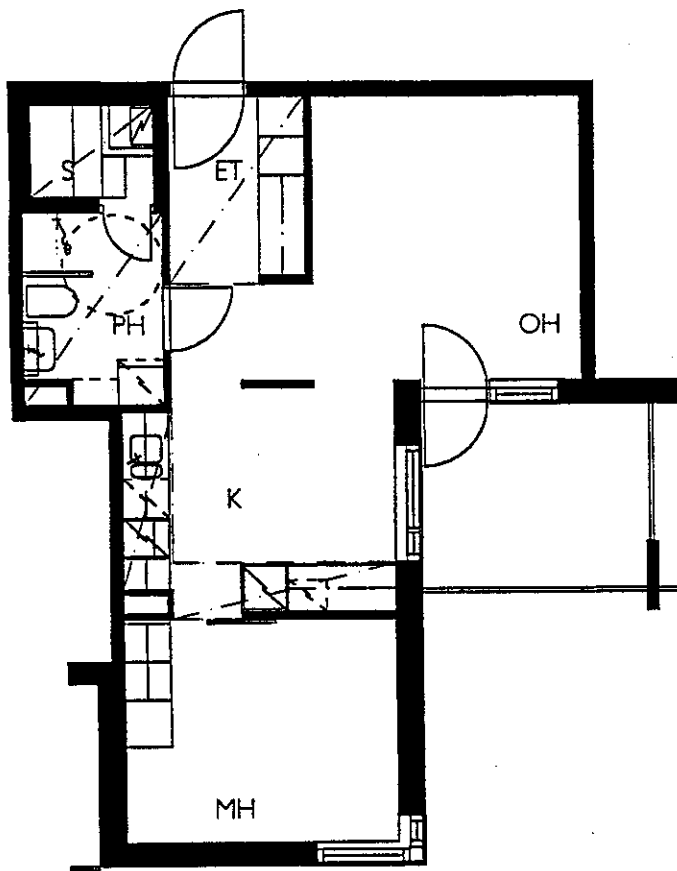
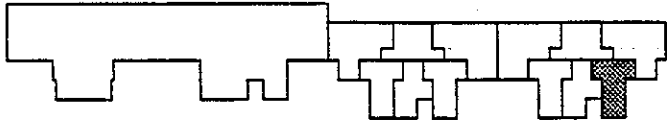




3.12.1999

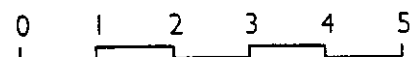
HELSINGIN ASUMISOIKEUS OY KUNINKAANKARTANONTIE 6

2H+K+S+PARVEKE 48.5 M<sup>2</sup>



ASUNNOT : A9

- KALEVANKATU 18 C
- KALEVAGATAN 18 C
- 00100 HELSINKI
- PUH. 09-725 66311
- FAX. 09-725 66333
- stefan@ahlman.pp.fi



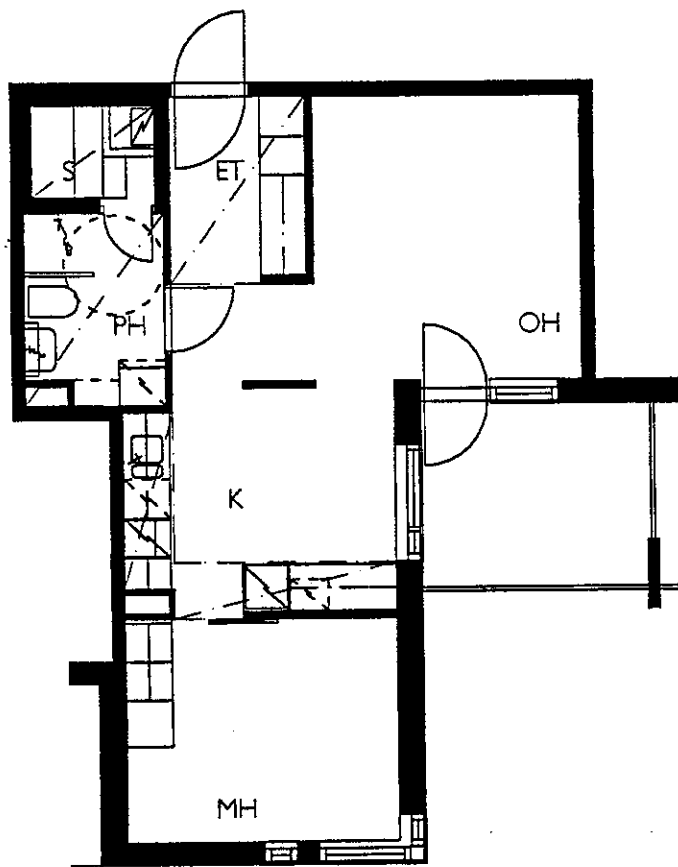
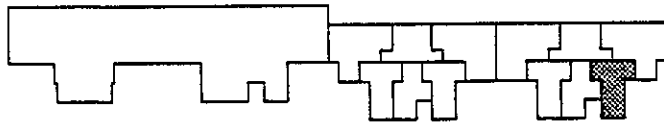




3.12.1999

HELSINGIN ASUMISOIKEUS OY KUNINKAANKARTANONTIE 6

2H+K+S+PARVEKE 48.5 M2



ASUNNOT : A 14, A 19

- KALEVANKATU 18 C
- KALEVAGATAN 18 C
- 00100 HELSINKI
- PUH. 09-725 66311
- FAX. 09-725 66333
- stefan@ahlman.pp.fi

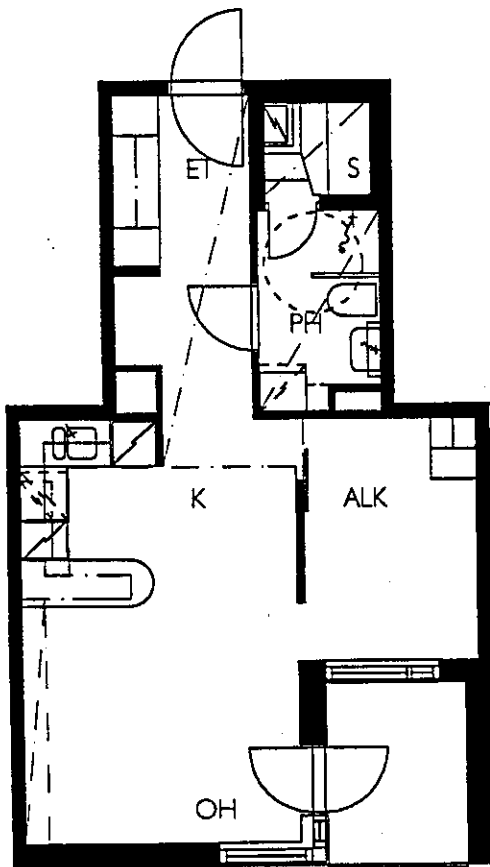
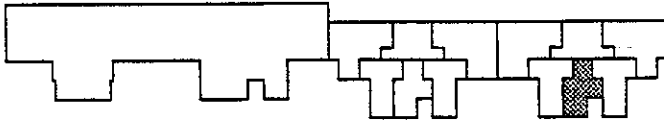




3.12.1999

HELSINGIN ASUMISOIKEUS OY KUNINKAANKARTANONTIE 6

IH+KK+ALK.+S+PARVEKE 41.5 M<sup>2</sup>



ASUNNOT: A 5, A 10, A 15, A 20

- KALEVANKATU 18 C
- KALEVAGATAN 18 C
- 00100 HELSINKI
- PUH. 09-725 66311
- FAX. 09-725 66333
- stefan@ahlman.pp.fi

